

# Lightweight Lifters



The Hallins range of lifters are the heavy duty models standard with an ergonomic and a practical, strong design. Capacities range from 70-250kg.

- Push button up/down switch
- Portable battery charger
- Standard with polyethylene platform



NEWTON150

NEWTON250



STAINLESS70

part number	STAINLESS 70	NEWTON150	NEWTON250
platform	525 x 470mm W	525 x 470mm W	525 x 470mm W
lifting height	1765mm	1535mm	1735mm
low height	140mm	140mm	150mm
overall height	1970mm	1870mm	2175mm
weight	43kg	52kg	73kg
wheels	80/100mm	80/125mm	80/160mm
battery	12v lead acid sealed	12v lead acid sealed	12v lead acid sealed

The Econolift P80 is a lightweight battery operated electric lifting device. It has an aluminium mast and 240V built in battery charger and with a capacity of 80kg can be used in many lifting applications. The Econolift is ideal for repetitive lifting of light loads, in warehouse and assembly line operations.

- Push button up/down switch
- Built in batteries / charger
- Standard with polyethylene platform

**P80  
Standard**

**F80 Lift up platform  
and fold out forks**

**F80  
Fork Model**

**P80L  
Long**



part number	P80	P80L	F80
platform	470 x 600mm	470 x 600mm	470 x 600mm
forks	n/a	n/a	600 x 300mm
lifting height	1530mm	1780mm	1530mm
low height	120mm	120mm	120mm
overall height	1730mm	1980mm	1730mm
weight	43kg	49kg	45kg
wheels	75/100mm	75/100mm	75/100mm
battery	12v lead acid sealed	12v lead acid sealed	12v lead acid sealed

# ATTACHMENTS

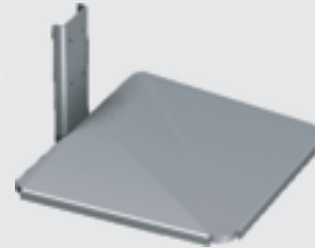
There are a number of attachments to suit our lifting range so there is sure to be one to suit your needs.

## ROLL HANDLING SPECIALISTS



### ALEX - Roll Boom

Alex can hold loads no one else can carry, tyres, spools and rolls. 40kg capacity. 600mm x 500mm long.



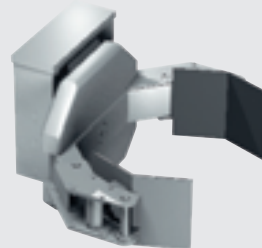
### JEEVES - Stainless Platform

Jeeves is a flat and stable stainless steel platform. Size - 600mm x 500mm L.



### ROLAND - Core Expander

The All-Around Expander is great when weight is tough. 100kg capacity, 76mm core.



### BENNY - Squeeze

Benny can grab drums, jars, buckets etc and turn them upside down. Electric turn and squeeze. 100kg capacity, 310-610mm adjustment.



### HEAVY DUTY - Core Expander

This expander, lifts, turns, rotates and positions to deal with varied rolls. 200kg capacity, 76mm core.



### LIZ - Core Expander

Liz can lift and turn from horizontal to vertical with ease. 80kg capacity, 76mm core.

### NANCY - Lift Up Platform

Nancy can go both ways, use her forks or her platform, sizes to suit.

### LINDA - Vee Block

Stainless steel, cradle suits maximum 60kg rolls. 400mm L x 290mm W x 80mm H. Suits polyethylene platform.

LOCAL DEALER



*The proof is in the product.*

Warehousing Equipment Pty Ltd. ABN: 27 324 806 021

1 Paramount Road, Footscray West,  
P.O. Box 4049, Footscray West  
Victoria, 3012, Australia

Telephone: (03) 9314 2611 Facsimile: (03) 9314 6300  
[www.warequip.com.au](http://www.warequip.com.au) [sales@warequip.com.au](mailto:sales@warequip.com.au)



*The proof is in the product.*