

* Warequip accepts no responsibility for equipment that is operated incorrectly, or not in accordance with operation manuals.

Zallys HS

400 KG

LOAD CAPACITY – 400kg on a level concrete surface

Evenly distributed loads as recommended

DO NOT OVERLOAD or obstruct operator view with high loads.



OPERATION

The unit is designed to operate in front of the user.



POWER – ON/OFF SWITCH

The Key switch is located on the right hand side of the control panel, turn the Key switch to on position for normal operation.

If powered status light flashes there may be a fault, please contact your supplier.



EMERGENCY STOP BUTTON

Push to disable the tug when power is on. This will shut down all systems apart from the brake. This button should not be use as a normal form of braking or as an on off switch. To reset, simply pull on the button until you feel it change position.



CONTROLS

When facing the machine, place your hands on both control handles. On the left hand side you will notice a red lever, it is a dead man switch, and the unit will not operate if the lever is not held down to the handle.

On the right hand side is the throttle, it is a twist grip.

Turn the handle anti clockwise for forward motion, and release to stop.

To go backwards there is a small button on the right side handle, simple push it and turn the throttle.

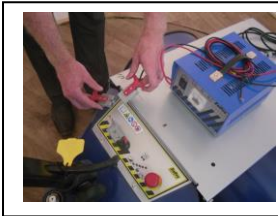
The speed is determined by how far you turn the twist grip.

Zallys HS



BATTERY INDICATOR

When fully charged the lights will illuminate to show 100%, as you use the tug the lights will change to show the level. Once the charges falls to 40% we recommend charging, a red light will flash for approximately 10 minutes before the unit loses all charge.



CHARGING

Unit has an external charger which is supplied separately to the machine

The charging point is located on the left hand side of control panel on the unit. Disconnect by pulling the two plugs apart.

Plug the charger lead into the plug on the tug (the plug will only fit the correct end) and then into power point.
– Charge with key switch in the OFF POSITION.

Turn the switch on the charger to the on position, a red light will come on and the amp meter will activate. If a flashing light appears please contact your supplier.

OVERNIGHT CHARGE IS RECOMMENDED

ONLY USE THE CHARGER SUPPLIED WITH THE UNIT.



UNLOADING THE BUCKET

To unload the bucket simply pull the lever under the left hand control handle and use your right hand to tilt the bucket. The bucket has gas strut assist so it should be easy to get it moving. Once unloaded pull the bucket back into place, you will hear it click and lock so it cannot come loose during movement.



Please ensure you are familiar with the manual and the correct operating instructions.

If in doubt contact supplier before use.