

* Warequip accepts no responsibility for equipment that is operated incorrectly, or not in accordance with operation manuals.

Zallys M5



TOW CAPACITY – 2000 to 4000kg on a level concrete surface depending on ballast

LOAD CAPACITY – 350kg

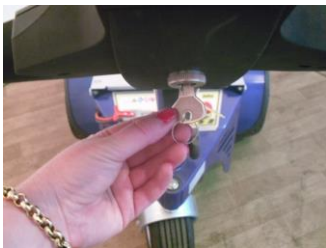
Evenly distributed loads as recommended

DO NOT OVERLOAD or obstruct operator view with high loads.



OPERATION

The unit is designed to trail behind the user. The front of the unit is the tiller head end.



POWER – ON/OFF SWITCH

The Key switch is located under the tiller handle, turn the Key switch to on position for normal operation.

If powered status light flashes there may be a fault, please contact your supplier.



EMERGENCY STOP BACK OFF BUTTON

Stops and repels the unit if activated when reversing.



EMERGENCY STOP BUTTON

Push to disable the tug when power is on. This will shut down all systems apart from the brake. This button should not be used as a normal form of braking or as an on off switch. To reset, simply pull on the button until you feel it change position.



PADDLE LEVER

When facing the machine; (Forward motion is to the tiller end)

Push lever down for forward motion.

Push lever forward for reverse motion.

The speed is determined by how far you turn the paddle.

The Tug and load should follow behind you when walking.

Zallys M5



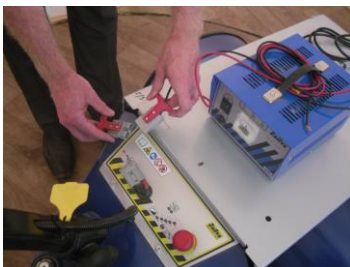
BATTERY INDICATOR

When fully charged the lights will illuminate to show 100%, as you use the tug the lights will change to show the level. Once the charges falls to 40% we recommend charging, a red light will flash for approximately 10 minutes before the unit loses all charge.



TILLER HEAD ADJUSTMENT

To adjust the tiller head, loosen the knob, adjust the tiller to the required height and tighten the knob securely.



CHARGING

Unit has an external charger which is supplied separately to the machine

The charging point is located on the left hand side of control panel on the unit. Disconnect by pulling the two plugs apart.

Plug the charger lead into the plug on the tug (the plug will only fit the correct end) and then into power point.
– Charge with key switch in the OFF POSITION.
Turn the switch on the charger to the on position, a red light will come on and the amp meter will activate.
If a flashing light appears please contact your supplier.

OVERNIGHT CHARGE IS RECOMMENDED

ONLY USE THE CHARGER SUPPLIED WITH THE UNIT.



Hitching

Various hitches can be supplied with the unit to suit your application. Always ensure connection takes place on a level surface. Activate the brakes on the trolley. Approach the trolley at a slow speed, ensure the centre of the hitch is in line with the centre of the trolley. Always ensure the trolley has made correct connection before unlocking the trolley brake and driving away.



Please ensure you are familiar with the manual and the correct operating instructions.

If in doubt contact supplier before use.