

* Warequip accepts no responsibility for equipment that is operated incorrectly, or not in accordance with operation manuals.

Zallys MICRO

250 KG

LOAD CAPACITY – Driver plus 250kg on a level surface
15 % SLOPE LOAD CAPACITY – Driver plus 100kg

Evenly distributed loads as recommended
DO NOT OVERLOAD or obstruct operator view with high loads.



OPERATION

The unit is designed to be a ride on vehicle. The front of the unit is the end with the handle bar controls.

POWER – ON/OFF SWITCH

When sitting on the unit the Key switch is located on the right hand side of the body, turn the Key switch to on position for normal operation.

If powered status light flashes there may be a fault, please contact your supplier.



EMERGENCY STOP BUTTON

Push to disable the MICRO when power is on. This will shut down all systems apart from the brake. This button should not be use as a normal form of braking or as an on off switch. To reset, simply pull on the button until you feel it change position.



CONTROLS

When sitting on the MIRC0 (Forward motion is to the handle bar end)

Push button on right hand side of the handle bar up for forward motion, release to stop.

Push button on right hand side of the handle bar down for reverse motion, release to stop.



SEAT ADJUSTMENT

To adjust the seat forward or backwards, pull the lever on the right hand side of the seat. To swivel the seat from side to side simply pull the lever located at the front of the seat, release it once in position and it will lock in place.

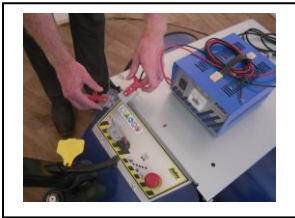


Zallys MICRO



BATTERY INDICATOR

When fully charged the lights will illuminate to show 100%, as you use the tug the lights will change to show the level. Once the charges falls to 40% we recommend charging, a red light will flash for approximately 10 minutes before the unit loses all charge.



CHARGING

Unit has an external charger which is supplied separately to the machine

The charging point is located on the left hand side on the MICRO's body. Disconnect by pulling the two plugs apart.

Plug the charger lead into the plug on the tug (the plug will only fit the correct end) and then into power point.
– Charge with key switch in the OFF POSITION.
Turn the switch on the charger to the on position, a red light will come on and the amp meter will activate.
If a flashing light appears please contact your supplier.

OVERNIGHT CHARGE IS RECOMMENDED

ONLY USE THE CHARGER SUPPLIED WITH THE UNIT.



Please ensure you are familiar with the manual and the correct operating instructions.

If in doubt contact supplier before use.